

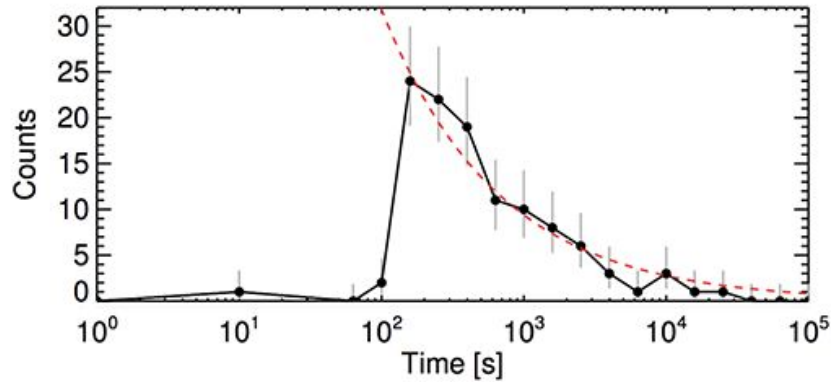
# Searching for fast extragalactic X-ray transients in Chandra surveys

Guang Yang

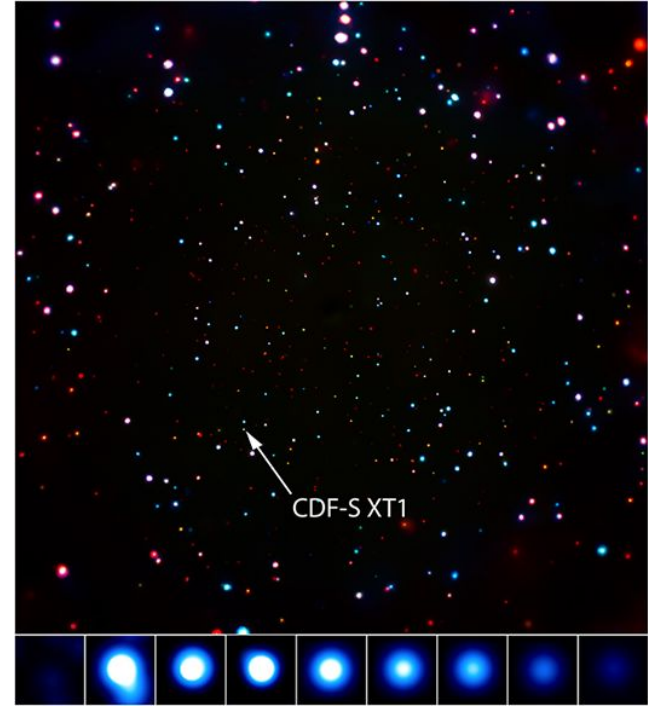
# Appendix C: Fast extragalactic X-ray transients



Franz Bauer

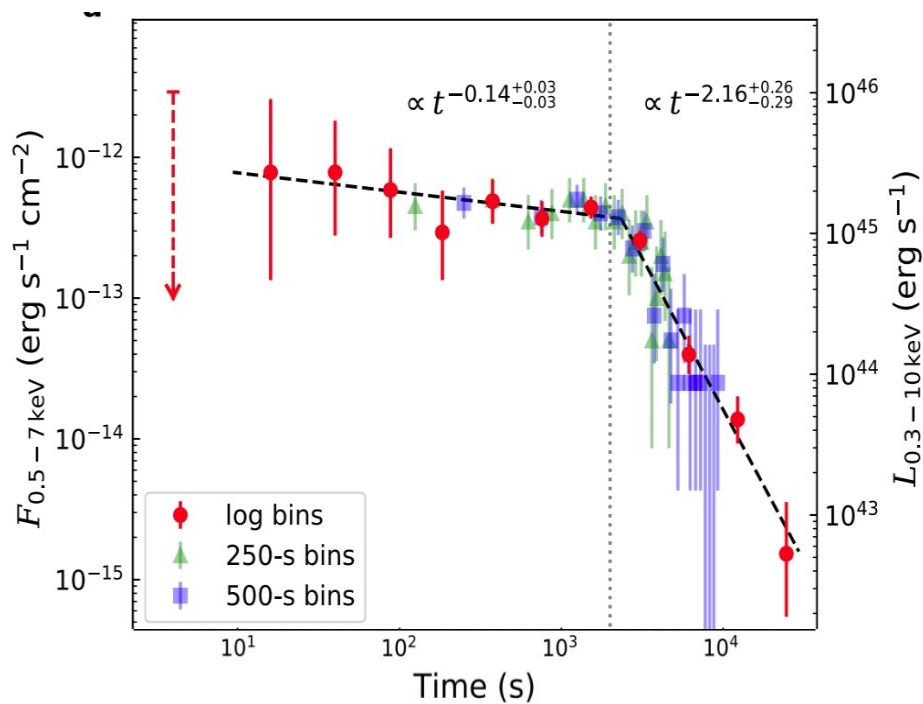


CDF-S XT1



Bauer et al. (2017)

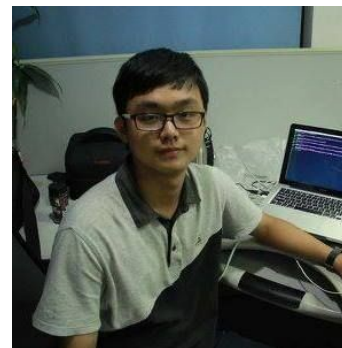
# Another transient: CDF-S XT2



Xue et al. (2019, Nature)



Yongquan Xue



Xuechen Zheng

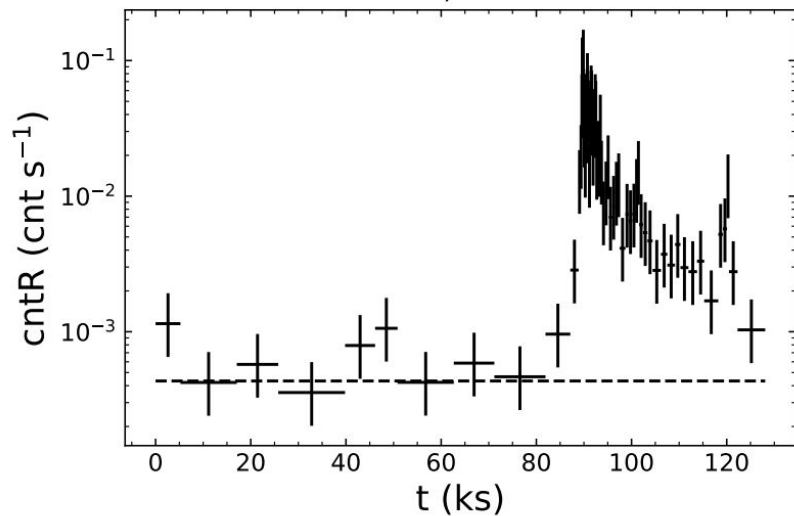
So, we do a **systematic search** of *Chandra* surveys

Survey (1)	Area (2)	Total Exp. (3)	Obs. Num. (4)	Src. Num. (5)	Reference (6)
CDF-S	0.13	6.9	101	1008	Luo et al. (2017)
CDF-N	0.12	2.0	20	683	Xue et al. (2016)
DEEP2	3.28	3.7	139	2976	Goulding et al. (2012); Nandra et al. (2015)
UDS	0.33	1.2	25	868	Kocevski et al. (2018); Suh et al. in prep.
COSMOS	2.20	4.5	117	4016	Civano et al. (2016); Marchesi et al. (2016)
E-CDF-S	0.31	1.0	9	1003	Xue et al. (2016)
All	6.38	19.3 Ms	411	10554	–

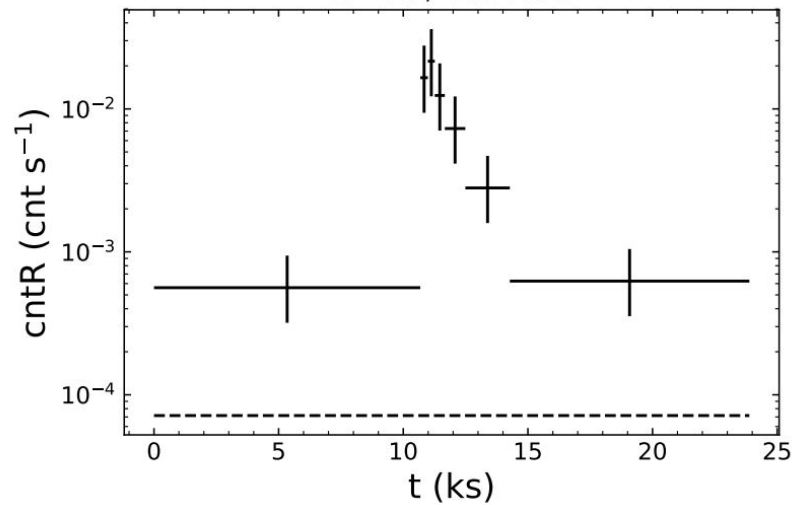
Yang et al. (2019)

# 15 new transients found

ID=3, CDF-S

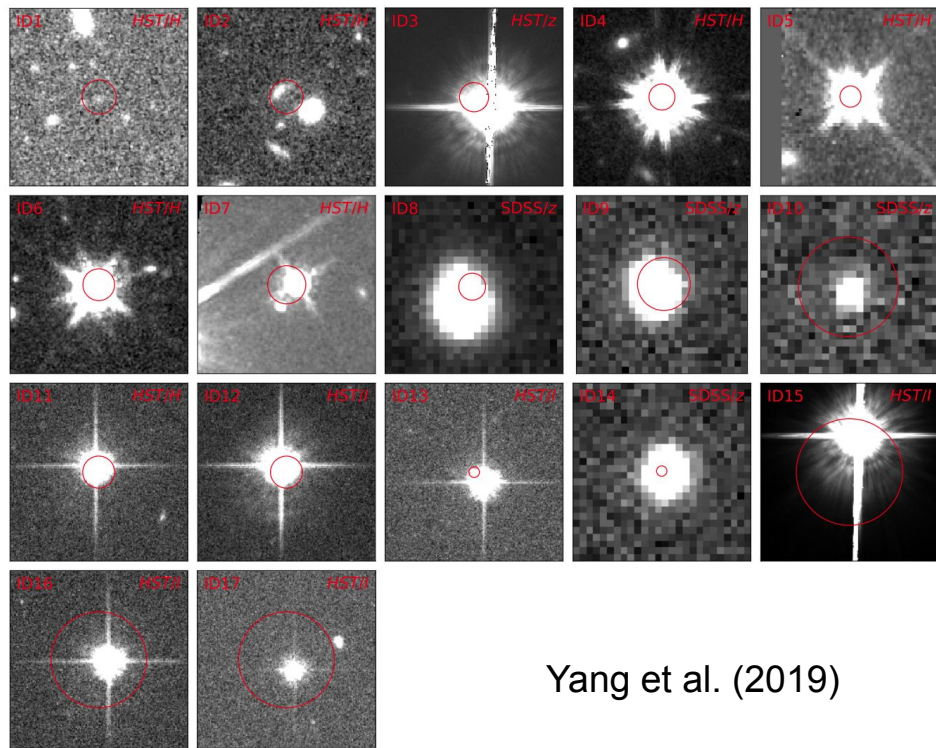


ID=16, COSMOS



Yang et al. (2019)

# All the new transients are **stars**



Yang et al. (2019)